

DEPARTMENT OF THE ARMY TECHNICAL MANUAL

**GENERAL SUPPORT
MAINTENANCE REPAIR PARTS AND SPECIAL TOOLS LIST
(INCLUDING DEPOT MAINTENANCE REPAIR PARTS AND SPECIAL TOOLS)
FOR
GYROSCOPE TEST FIXTURE MX-3723/ASW-12(V)**

**Headquarters, Department of the Army, Washington, D.C.
24 April 1974**

Current as of 15 December 1972

	Paragraph	Page
SECTION I. INTRODUCTION		
Scope	1-1.	1-1
General	1-2.	1-1
Explanation of columns	1-3.	1-1
Special information	1-4.	1-2
Location of repair parts	1-5.	1-2
Federal supply codes for manufacturers.....	1-6.	1-3
Recommendations for maintenance publication improvements	1-7.	1-3
II. REPAIR PARTS FOR GENERAL SUPPORT, AND DEPOT MAINTENANCE		2-1
III. SPECIAL TOOLS, TEST AND SUPPORT EQUIPMENT FOR GENERAL SUPPORT, AND DEPOT MAINTENANCE (NOT APPLICABLE)		
I-v. INDEX-FEDERAL STOCK NUMBER AND REFERENCE NUMBER CROSS-REFERENCE TO FIGURE AND ITEM NUMBER OR REFERENCE DESIGNATION (NOT APPLICABLE)		
V. INDEX-REFERENCE DESIGNATION CROSS-REFERENCE TO PAGE NUMBER (NOT APPLICABLE)		

*This manual supersedes so much of TM 11-6625-443-35P, 17 January 1962, as pertains to MX-3723/ASW-12(V).

SECTION I

INTRODUCTION

1-1. Scope

This manual lists repair parts required for the performance of general support and depot maintenance of the MX-3723/ASW-12(V).

1-2. General

This Repair Parts List is divided into the following sections:

a. Repair Parts for Direct Support, General Support, and Depot Maintenance -Section II. A list of repair parts authorized for the performance of maintenance at the general support and depot level.

b. Special Tools, Test and Support Equipment for Organizational Maintenance -Section III. Not applicable.

c. Index-Federal Stock Number and Reference Number Cross-Reference to Figure and Item Number or Reference Designation -Section III. Not applicable.

d. Index-Reference Designation Cross-Reference to page Number -Section IV. Not applicable.

1-3. Explanation of Columns

The following provides an explanation of columns in the tabular lists:

a. Source, Maintenance, and Recoverability Codes (SMR), Column 1.

(1) Source code indicates the selection status and source for the listed item. Source codes are:

Code	Explanation
P	Repair parts which are stocked in or supplied from the GSA/DSA or Army supply system and authorized for use at indicated maintenance categories.
P2	Repair parts which are procured and stocked for insurance purposes because the combat or military essentiality of the end item dictates that a minimum quantity be available in the supply system.
P9	Assigned to items which are NSA design controlled: unique repair parts, special tools, test, measuring and diagnostic equipment, which are stocked and supplied by the Army COMSEC logistic system, and which are not subject to the provisions of AR 380-41.
P10	Assigned to items which are NSA design controlled: special tools, test, measuring and diagnostic equipment for COMSEC

Code	Explanation
	support, which are accountable under the provisions of AR 380-41, and which are stocked and supplied by the Army COMSEC logistic system.

G - Major assemblies that are procured with PEMA funds for initial issue only as exchange assemblies at DSU and GSU level. These assemblies will not be stocked above DS and GS level or returned to depot supply level.

(2) Maintenance code indicates the lowest category of maintenance authorized to install the listed item. The maintenance level codes are:

Code	Explanation
C	Operator/crew
O	Organizational maintenance
F	Direct support maintenance
H	General support maintenance
D	Depot maintenance

(3) Recoverability code indicates whether unserviceable items should be returned for recovery or salvage. Items not codes are expendable. Recoverability codes are:

Code	Explanation
R	Repair parts and assemblies that are economically repairable at DSU and GSU activities and normally furnished by supply on an exchange basis.
M	Repair parts which are not procured or stocked, but are to be manufactured in indicated maintenance levels.
A	Assemblies which are not procured or stocked as such, but are made up of two or more units. Such component units carry individual stock numbers and descriptions, are procured and stocked separately and can be assembled to form the required assembly at indicated maintenance categories.
X	Parts and assemblies which are not procured or stocked and the mortality of which normally is below that of the applicable end item or component. The failure of such part or assembly should result in retirement of the end item from the supply system.
X 1	Repair parts which are not procured or stocked. The requirement for such items will be

<i>Code</i>	<i>Explanation</i>
	filled by use of the next higher assembly or component.
X2	Repair parts which are not stocked. The indicated maintenance category requiring such repair parts will attempt to obtain same through cannibalization. Where such repair parts are not obtainable through cannibalization, requirements will be requisitioned, with accompanying justification, through normal supply channels.
S -	Repair parts and assemblies which are economically repairable at DSU and GSU activities and which normally are furnished by supply on an exchange basis. When items are determined by a GSU to be uneconomically repairable, they will be evacuated to a depot for evaluation and analysis before final disposition.
T -	High dollar value recoverable repair parts which are subject to special handling and are issued on an exchange basis. Such repair parts normally are repaired or overhauled at depot maintenance activities.
U -	Repair parts specifically selected for salvage by reclamation units because of precious metal content, critical materials, or high dollar value reusable casing or castings.

b. Federal Stock Number, Column 2. Indicates the **Federal stock number** assigned to the item and will be used for requisitioning purposes.

c. Description, Column 3. Indicates the Federal item name and any additional description of the item **required.** A **part number or other reference number is followed by the applicable five-digit Federal supply code for manufacturers in parentheses.**

d. Unit of Measure (U/M), Column 4. A two-character alphabetic abbreviation indicating the **amount or quantity of the item** upon which the allowances are based, e.g., ft., ea, pr, etc.

e. Quantity Incorporated in Unit, Column 5. Indicates the quantity of the item used in the assembly group.

f. Allowances (30-Day GS Maintenance, 1 Year Per Equipment (Contingency), and Depot Maintenance),

Columns 7, 8, and 9. Items authorized for requisition as required are identified by an asterisk in the allowance column.

g. Illustrations, Column 10.

(1) Figure number, Column 10a. **Indicates the figure number of the illustration in which the item is shown.**

(2) Item number or reference designation, Column 10b. Indicates the reference designation used to identify the item **in the illustration.**

1-4. Special Information

a. The following publications pertain to Gyroscope Test Fixture MX-3723/ASW-12(V):

TM 11-6625-519-12 Operator anti Organizational Maintenance Manual: Test Set, Altitude Control TS-1643/ASWE-12(V), Test Set Displacement. Gyroscope TS-1644/ASW-12(V), Vibrating Machine, Gyroscope MX-3722/ASW-12(V), Fixture, Test Gyroscope MX-3723/ASW-12(V), Test Set. Altitude Reference Control TS-1659/ASW-12(V), Test Set, Coupler TS-1661/ASW-12(V), Test Set, Coupler TS-1652/ASW-12(V), Test Set, Collective Pitch Command Control T.S-1651/ASW-12(V). Test Set. Altitude Control TS-1656/ASW-12(V), Test Set. Automatic Controller TS-1658/ASW-12(V), Test Set, Rotary Transducer TS-1657/ASW-12(V), Test Set, Gyro Control TS-1660/ASW-12(V), Table, Tilting, Gyro Instrument Testing MX-4708/ASW-12(V). Fixture, Test, Accelerometer MX-4043/ASW-12(V), Test Set. Interlock Control TS-1738/ASW-12(V). Test Set, Directional Control Panel-Acceleration Monitor TS-1912/ASW-12(V).

TM11-6625-519-34 DA and GS Maintenance Manual: Test Set. Altitude Control TS-1643/ASW-12(V), Test Set, Displacement Gyroscope TS-1644/ASW-12(V). Vibrating Machine, Gyroscope MX-3722/ASW-12(V), Fixture, Test Gyroscope MX-3723/ASW-12(V), Test Set, Altitude Reference Control TS-1659/ASW-12(V), Test Set, Coupler TS-1661/ASW-12(V), Test Set, Coupler TS-1652/ASW-12(V). Test Set, Collective Pitch Command Control TS-1651/ASW-12(V), Test Set, Altitude Control TS-1656/ASW-12(V), Test Set, Automatic Controller TS-1658/ASW-12(V), Test Set, Rotary Transducer TS-1657/ASW-12(V), Test Set, Gyro Control TS-1660/ASW-12(V), Table, Tilting, Gyro Instrument Testing MX-4708/ASW-12(V), Fixture, Test, Accelerometer MX-4043/ASW-12(V) Test Set, Interlock Control TS-1738/ASW-12(V), Test Set, Directional Control Panel-Acceleration Monitor TS-1912/ASW-12(V).

b. Parts which require manufacture at a category higher than that authorized for installation will indicate in the source column the higher category.

1-5. Location of Repair Parts

This manual does not contain cross-reference indexes. To locate a repair part, identify the part in the illustration and scrutinize column 3 of the repair parts list (sect. II).

1-6. Federal Supply Code for Manufacturers

<i>Code</i>	<i>Manufacturer</i>
07187	Sperry Flight Systems, Division of Sperry Rand Corp.
56232	Sperry Gyroscope, Division of Sperry Rand Corp.
96906	Military Standards

1-7. Recommendations for Maintenance Publication Improvements

The reporting of errors, omissions, and recommendations for improving this publication by the individual user is encouraged. Reports should be submitted on DA Form 2028 (Recommended Changes to Publications and Blank Forms) and forwarded direct to Commander, US Army Electronics Command, ATTN: AMSEL-MA-A, Fort Monmouth, NJ 07703.

SECTION II REPAIR PARTS FOR DIRECT SUPPORT, GENERAL SUPPORT, AND DEPOT MAINTENANCE:

(1) SR CODE	(2) FEDERAL STOCK NUMBER	(3) DESCRIPTION USABLE ON CODE	(4) UNIT OF MEAS	(5) QTY INC IN UNIT	(6) 30-DAY DS MAINT ALLOWANCE			(7) 30-DAY GS MAINT ALLOWANCE			(8) 1 YR ALW PER EQUIP CNTGTY	(9) DEPOT MAINT ALW PER 100 EQUIP	(10) ILLUSTRATIONS	
					(a) 1-20	(b) 21-50	(c) 51-100	(a) 1-20	(b) 21-50	(c) 51-100			(a) FIG NO.	(b) ITEM NO. OR REFERENCE DESIGNATION
	5625-987-8532	FIXTURE, TEST, GYROSCOPE MX-3723/ASW-12(V)1 (THIS ITEM IS NONEXPENDABLE)											A1	
M-D		BASEPLATE 2578818 (07187)	EA	1								2-1	A1MP1	
P-H	3120-182-8734	BUSHING, SLEEVE 2518527 (07187)	EA	4			*	*	*	*	*	2-1	A1MP1MP1	
P-H		BEARING, GYROSCOPE ADAPTER 2554157 (07187)	EA	1			*	*	*	*	*	2-1	A1MP2	
P-H		BEARING PLATE 2554156 (07187)	EA	1			*	*	*	*	*	2-1	A1MP3	
P-R	3120-182-8761	BUSHING, SLEEVE 2518529 (07187)	EA	1			*	*	*	*	*	2-1	A1MP4	
P-H	5310-151-8878	NUT, PLAIN KNURLED 2554155 (07187)	EA	3			*	*	*	*	*	2-1	A1H1	
P-O		KNOB 2518526 (07187)	EA	1			*	*	*	*	*	2-1	A1H2	
P-H	5315-151-8879	PIN, SPRING 0694-38 (56232)	EA	1			*	*	*	*	*	2-1	A1H3	
P-H		PLATE, ANGLE 2578817 (07187)	EA	1			*	*	*	*	*	2-1	A1MP5	
MD-I		PLATE, IDENTIFICATION 2580152-15 (07187)	EA	1									A1MP6	
P-H		PLATE, RETAINING BEARING 2518530 (07187)	EA	1			*	*	*	*	*	2-1	A1MP7	
P-H	5305-2853-5612	SCREW, DRIVE MS21118-15 (96906)	EA	2			*	*	*	*	*	2-2	A1H4	
P-H	5305-939-9149	SCREW, MACHINE MS35275-283 (96906)	EA	3			*	*	*	*	*	2-2	A1H5	
P-H		SCREW, MACHINE MS35249-20 (96906)	EA	6			*	*	*	*	*	2-1	A1H6	
P-H	5305-054-6668	SCREW, MACHINE MS1957-43 (96906)	EA	6			*	*	*	*	*	2-1	A1H7	
P-H		SCREW, MACHINE MS15233-77 (96906)	EA	4			*	*	*	*	*	2-1	A1H8	
P-H	5340-152-0132	SHAFT, SHOULDERED 2518528 (07187)	EA	1			*	*	*	*	*	2-1	A1MP8	
P-H		SPRING, HELICAL COMPRESSION 2518531 (07187)	EA	-			*	*	*	*	*	2-1	A1H9	
P-H	5307-151-8862	STUD, SHOULDERED 2518525 (07187)	EA	3			*	*	*	*	*	2-1	A1H10	
P-H	5310-933-8119	WASHER, LOCK MS35338-137 (96906)	EA	6			*	*	*	*	*	2-1	A1H11	
P-H	5310-933-8120	WASHER, LOCK MS35338-138 (96906)	EA	3			*	*	*	*	*	2-1	A1H12	
P-H	5310-933-8121	WASHER, LOCK MS35338-139 (96906)	EA	3			*	*	*	*	*	2-2	A1H13	
P-H		TABLE TOP GYROSCOPE ADAPTER 2578819 (07187)	EA	1			*	*	*	*	*	2-1	A1MP9	

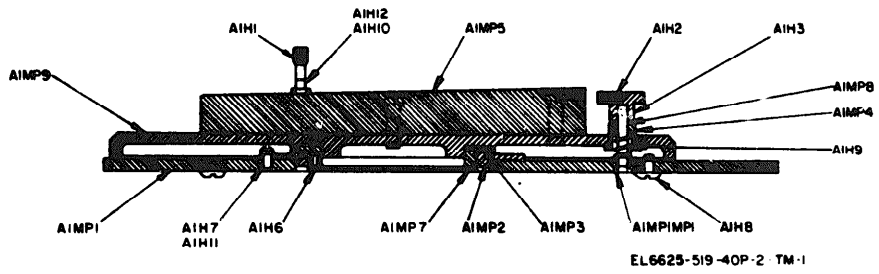


Figure 2-1. Fixture, test, gyroscope, sectional side view.

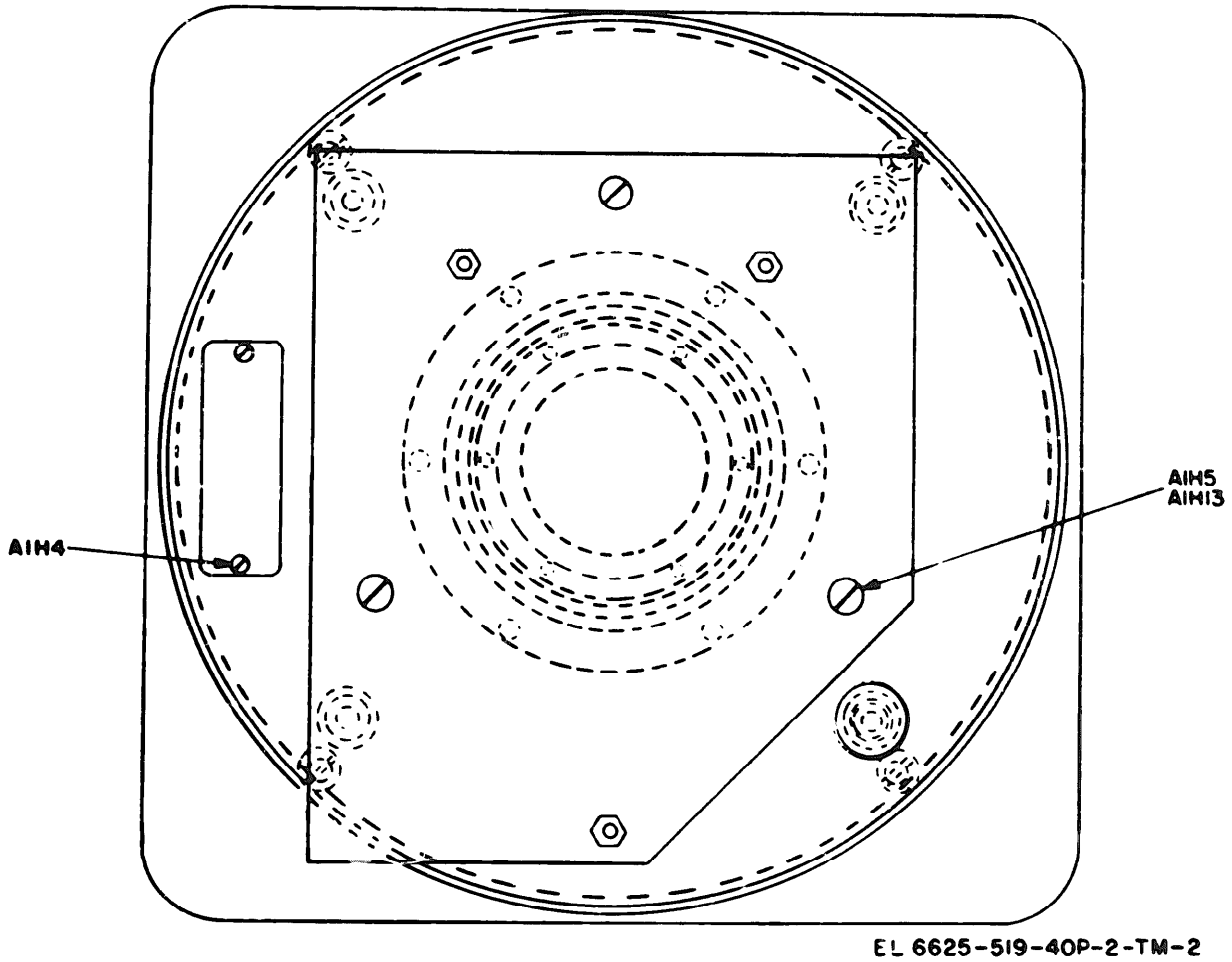


Figure 2-2. Fixture, test, gyroscope, top view.

By Order of the Secretary of the Army:

Official:

VERNE L. BOWERS

Major General, United States Army
The Adjutant General

CREIGHTON W. ABRAMS
General, United States Army
Chief of Staff

Distribution:

To be distributed in accordance with DA Form 12-36, (qty rqr Block no. 233) Direct and General Support maintenance requirements for AN/ASW-12.

★ U.S. GOVERNMENT PRINTING OFFICE: 1974-768116/1300

END

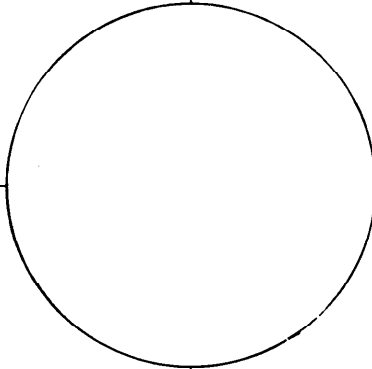
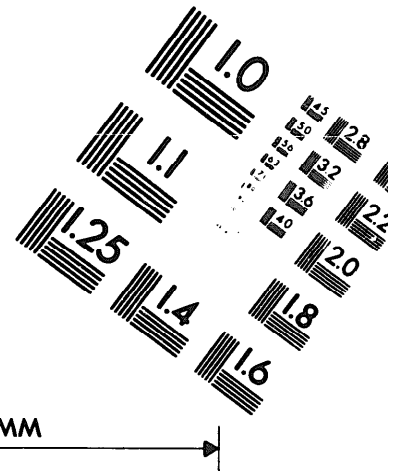
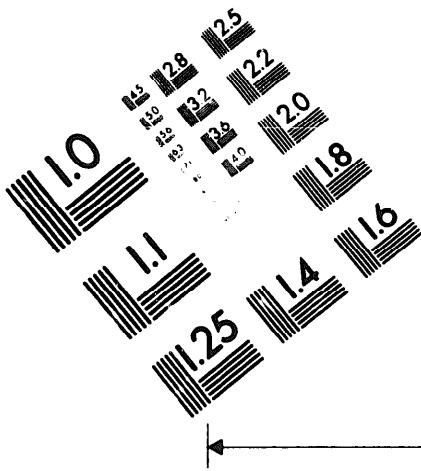
01-03-83

DATE



DEPARTMENT OF THE ARMY

MICROFORM
TEST TARGET



150 MM

1.0 mm (e= .81 mm)

ABCDEFGHIJKLMN OPQRSTUVWXYZ 1234567890
abcdefghijklmnopqrstuvwxyz \$%&' /%# 1/2 1/4 3/4 — = + * & @ *

1.5 mm (e= 1.09 mm)

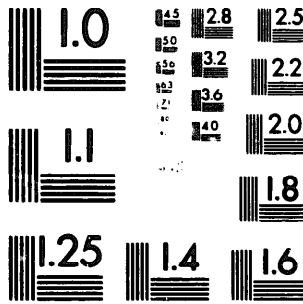
ABCDEFGHIJKLMN OPQRSTUVWXYZ 1234567890
abcdefghijklmnopqrstuvwxyz \$%&' /%# 1/2 1/4 3/4 — = + * & @ *

2.0 mm (e= 1.37 mm)

ABCDEFGHIJKLMN OPQRSTUVWXYZ
abcdefghijklmnopqrstuvwxyz
1234567890 \$%&' /%# 1/2 1/4 3/4 — = + * & @ *

2.5 mm (e= 1.77 mm)

ABCDEFGHIJKLMN OPQRSTUVWXYZ
abcdefghijklmnopqrstuvwxyz
1234567890 \$%&' /%# 1/2 1/4 3/4 — = + * & @ *



1.0 mm (e= .81 mm)

ABCDEFGHIJKLMN OPQRSTUVWXYZ 1234567890
abcdefghijklmnopqrstuvwxyz \$%&' /%# 1/2 1/4 3/4 — = + * & @ *

1.5 mm (e= 1.09 mm)

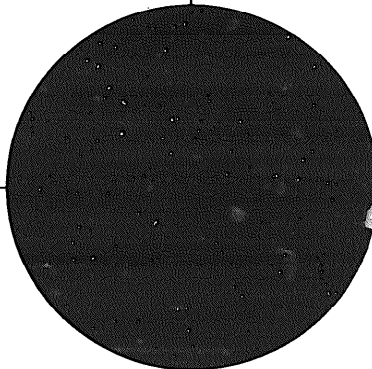
ABCDEFGHIJKLMN OPQRSTUVWXYZ 1234567890
abcdefghijklmnopqrstuvwxyz \$%&' /%# 1/2 1/4 3/4 — = + * & @ *

2.0 mm (e= 1.37 mm)

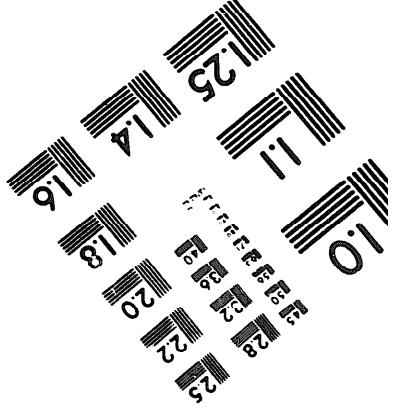
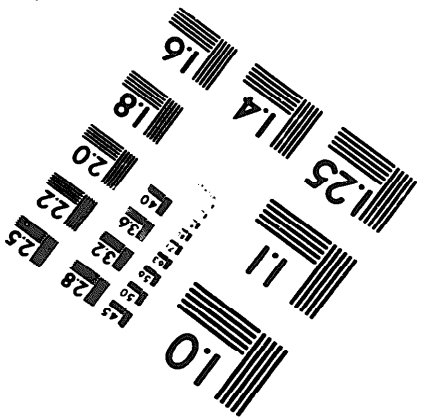
ABCDEFGHIJKLMN OPQRSTUVWXYZ
abcdefghijklmnopqrstuvwxyz
1234567890 \$%&' /%# 1/2 1/4 3/4 — = + * & @ *

2.5 mm (e= 1.77 mm)

ABCDEFGHIJKLMN OPQRSTUVWXYZ
abcdefghijklmnopqrstuvwxyz
1234567890 \$%&' /%# 1/2 1/4 3/4 — = + * & @ *



200 MM



250 MM